

# thePassa P360-101 UP WH

Item no.: 2010300



Presence and motion detectors  
Ceiling installation indoor

## Description

- Passive infra-red presence detector for flush-mounted ceiling installation
- Rectangular detection area 360°, 30 x 4,5 m, (135 m²) at mounting height 3 m, for corridors and storage areas, with 2 individually connectable and disconnectable detection zones
- 1 channel light (Relay, 230 V) and 1 channel presence (Relay, floating for HVAC control)
- Automatic presence- and brightness-dependent control for lighting and HVAC
- Mixed light measurement suitable for fluorescent lamps (FL/PL/ESL), halogen/incandescent lamps and LEDs
- Choice of fully or semi-automatic operation
- Adjustable brightness switching value, teach-in function
- Reduction of switch-off delay time in the event of short presence (brief-presence)
- Connection option for sensors or switches for manual switching with automatic recognition of sensor/switch
- Pulse function for staircase light time switch
- Channel H, presence: relay, floating
- e.g. for HVAC control
- Switch-on delay and switch-off delay configurable
- Sensitivity adjustable
- Detection area can be limited using cover clip
- Ready for immediate use due to factory preset
- Test mode for checking function and detection area
- Extension of detection area via Master/Slave or Master/Master switching, a maximum of 10 detectors can be switched in parallel with each other
- Ceiling installation in flush-mounted socket
- Ceiling installation also possible with surface-mounted frame
- User remote control theSenda S, management remote control SendoPro (optional)



## Technical data

| thePassa P360-101 UP WH |                      |
|-------------------------|----------------------|
| Operating voltage       | 110 V AC - 230 V AC  |
| Frequency               | 50 - 60 Hz           |
| Installation height     | 2 - 6 m              |
| Maximum height          | 15 m                 |
| Minimum height          | 1.7 m                |
| Installation type       | Ceiling installation |
| Colour                  | White                |

| thePassa P360-101 UP WH  |                         |
|--------------------------|-------------------------|
| Switching output         | Light   Presence        |
| Power consumption        | ca. 0.1 W               |
| Light measurement        | Mixed light measurement |
| Setting range brightness | 30 - 3000 lx            |
| Light switch-off delay   | 10 s - 60 min           |

# thePassa P360-101 UP WH

Item no.: 2010300



## Technical data

| thePassa P360-101 UP WH        |  | thePassa P360-101 UP WH     |                                 |
|--------------------------------|--|-----------------------------|---------------------------------|
| Lamp types                     | Incandescent/halogen lamps, fluorescent lamps, Energy saving lamps, LEDs | Presence switch-off delay   | 10 s - 120 min                  |
| Incandescent/halogen lamp load | 2300 W   | Switching capacity presence | 50 W/50 VA                      |
| Compact and fluorescent lamps  | 1150 VA (cos $\varphi$ = 0,5)  | Type of connection          | Screw terminals                 |
| Inrush current                 | max. 800 A / 200 $\mu$ s   | Max. cable cross section    | max. 2 x 2,5 mm <sup>2</sup>    |
| LED lamp < 2 W                 | 60 W   | Size of concealed housing   | 55 mm                           |
| LED lamp 2-8 W                 | 600 W  | Detection range             | 150 m <sup>2</sup> (30,0 x 5 m) |
| LED lamp > 8 W                 | 600 W  | Detection angle             | 360°                            |
| Switch-on delay presence       | 0 s - 10 min / Room surveillance   | Ambient temperature         | -15°C ... 50°C                  |
|                                |  | Type of protection          | IP 54 (when fitted)             |

## Connection example

### Detection range for planning applications at a temperature of 21 °C

| Mounting height (A) | Diagonally (t)                    | Head on to (R)                   |  |
|---------------------|-----------------------------------|----------------------------------|--|
| 2 m                 | 56 m <sup>2</sup>   16 m x 3.5 m  | 56 m <sup>2</sup>   16 m x 3.5 m |  |
| 2.5 m               | 88 m <sup>2</sup>   22 m x 4 m    | 72 m <sup>2</sup>   18 m x 4 m   |  |
| 3 m                 | 135 m <sup>2</sup>   30 m x 4.5 m | 90 m <sup>2</sup>   20 m x 4.5 m |  |
| 3.5 m               | 150 m <sup>2</sup>   30 m x 5 m   | 100 m <sup>2</sup>   20 m x 5 m  |  |
| 4 m                 | 150 m <sup>2</sup>   30 m x 5 m   | 100 m <sup>2</sup>   20 m x 5 m  |  |
| 4.5 m               | 150 m <sup>2</sup>   30 m x 5 m   | 100 m <sup>2</sup>   20 m x 5 m  |  |
| 5 m                 | 150 m <sup>2</sup>   30 m x 5 m   | 100 m <sup>2</sup>   20 m x 5 m  |  |
| 5.5 m               | 150 m <sup>2</sup>   30 m x 5 m   | 100 m <sup>2</sup>   20 m x 5 m  |  |
| 6 m                 | 150 m <sup>2</sup>   30 m x 5 m   | 100 m <sup>2</sup>   20 m x 5 m  |  |

Subject to technical changes and misprints

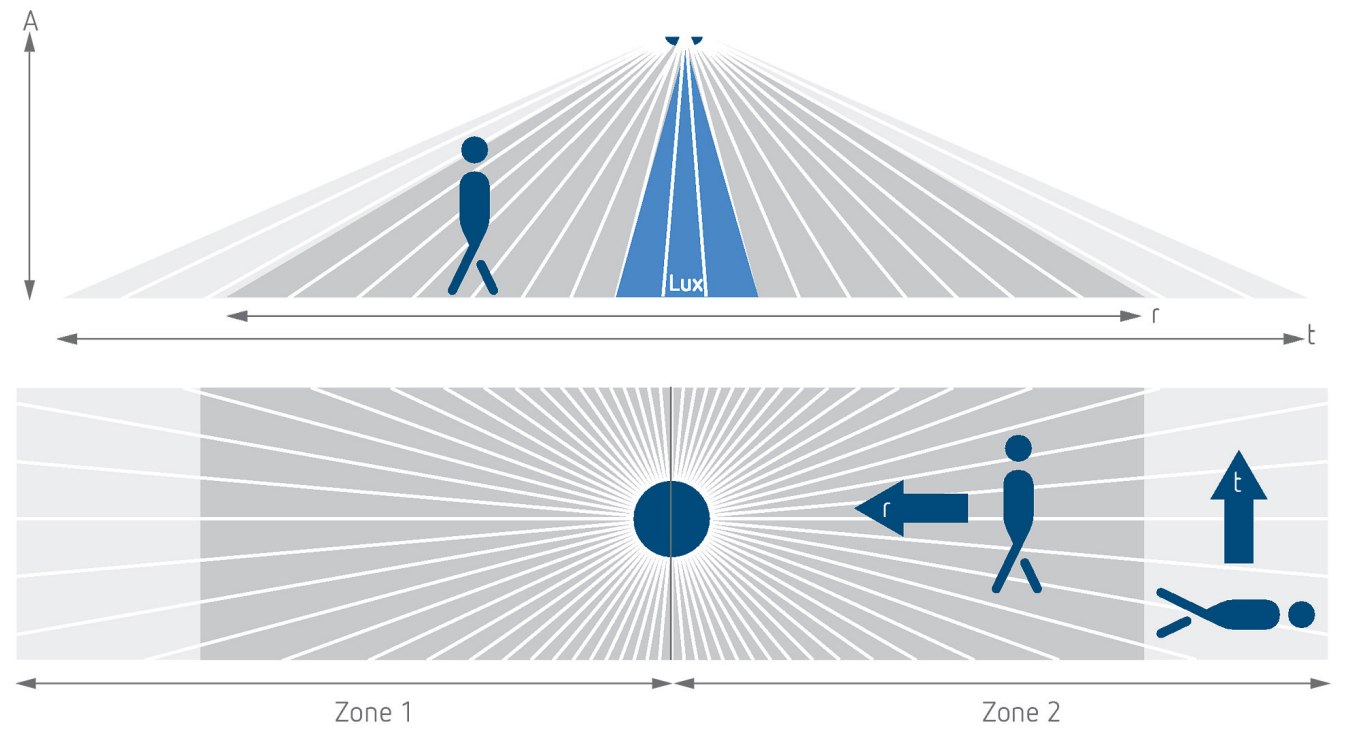
additional information at: [www.theben.de/product/2010300](http://www.theben.de/product/2010300)

The load data are determined with exemplary selected illuminants and are therefore typical data due to the large number of available products.

07/04/2025

Page 2 of 5

Detection range for planning applications at a temperature of 21 °C



Detection range according to Sensnorm IEC 63180

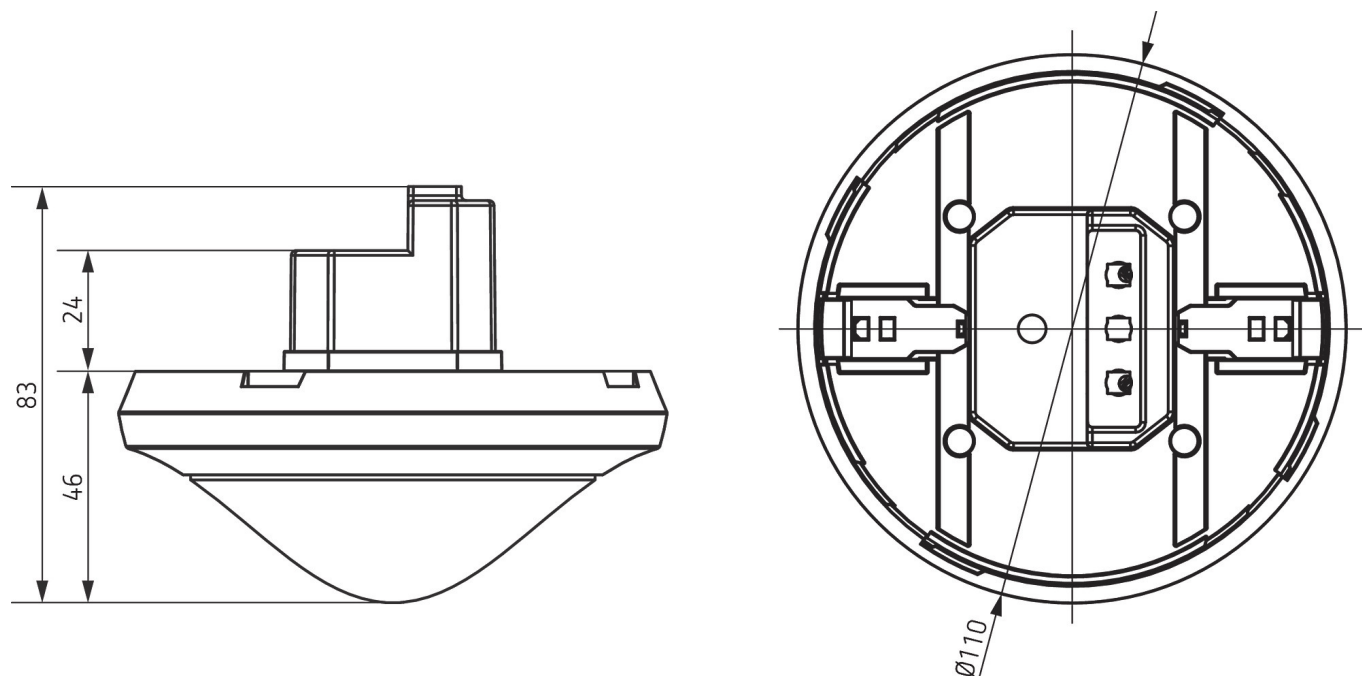
| Mounting height (A) | Diagonally (T)                   | Head on to (R)                     |  |
|---------------------|----------------------------------|------------------------------------|--|
| 2.5 m               | 215 m <sup>2</sup>   43 m x 5 m  | 62 m <sup>2</sup>   14.8 m x 4.2 m |  |
| 6 m                 | 550 m <sup>2</sup>   50 m x 11 m | 495 m <sup>2</sup>   45 m x 11 m   |  |
| 15 m                | 800 m <sup>2</sup>   40 m x 20 m | 600 m <sup>2</sup>   30 m x 20 m   |  |

# thePassa P360-101 UP WH

Item no.: 2010300

**theben**

## Scale drawings



## Accessories

### theSenda P

Item no.: 9070910



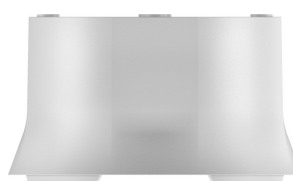
### theSenda S

Item no.: 9070911



### Surface frame 110A WH

Item no.: 9070912



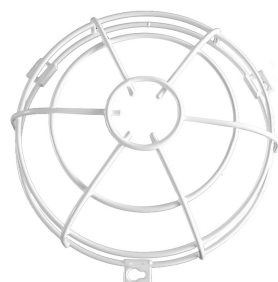
### Masking clip

Item no.: 9070921



### QuickSafe

Item no.: 9070531



### theSenda B

Item no.: 9070985



### Cover 110 GR

Item no.: 9070591



### Ceiling installation box 68A

Item no.: 9070992



Subject to technical changes and misprints

additional information at: [www.theben.de/product/2010300](http://www.theben.de/product/2010300)

The load data are determined with exemplary selected illuminants and are therefore typical data due to the large number of available products.

07/04/2025

Page 4 of 5

# thePassa P360-101 UP WH

Item no.: 2010300



## Accessories

---

### Surface frame 110A BK

Item no.: 9070600



### Cover 110 BK

Item no.: 9070851



Subject to technical changes and misprints

additional information at: [www.theben.de/product/2010300](http://www.theben.de/product/2010300)

The load data are determined with exemplary selected illuminants and are therefore typical data due to the large number of available products.

07/04/2025

Page 5 of 5