



适用范围

适用于船舶、港口、码头、车站和广场等场所照明。

产品特点:

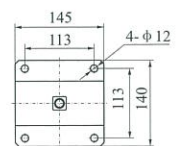
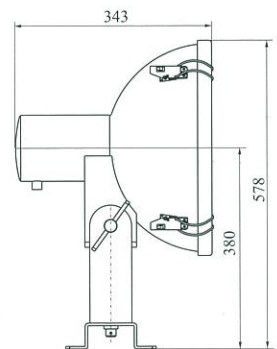
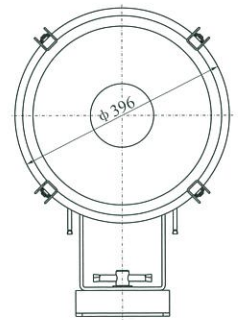
1. 灯罩为透明钢化玻璃，反光镜为高纯度铝板，反射效率高。
2. 灯体可以水平旋转 $\pm 180^\circ$ ，俯仰 120° 。

The scope of application

Applied to illumination of ship, port, dock, station and plaza etc.

Products characteristic:

1. The lampshade is transparent toughened glass, the reflector is plated by chrome with high reflection efficiency.
2. Light body can rotate for $\pm 180^\circ$ horizontally, and pitching 120° .



型号Type	TG2-A	TG2-B
功率Power	500W	
重量Weight	9.7kg	
光通量 Luminous flux (lm)	8300	
电压 Voltage	DC110V/AC220V	
灯头 Lamp Holder	E40	
光源Illuminant	白炽灯泡 Incandescent bulb	
材质Material	钢Steel	
防护等级Protection Class	IP56	
电缆外径Cable outside Diameter	$\phi 10 - \phi 12$	
备注Remark	无网Without guard	带网罩With guard

