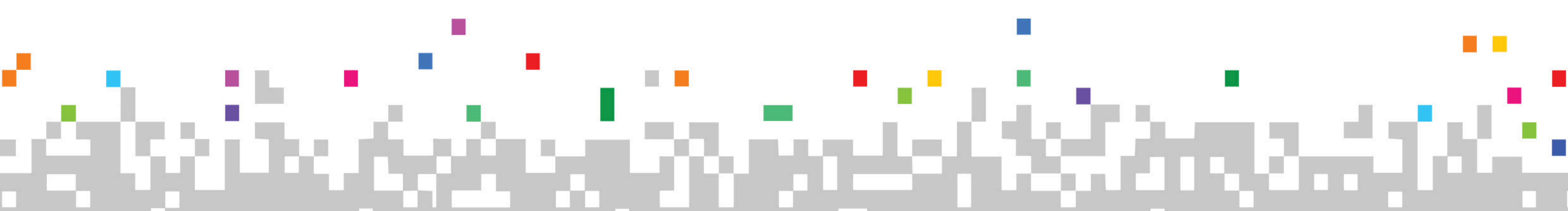




A versatile range of ePaper display solutions by Delight, designed to help businesses communicate more effectively and connect with customers. Transforming the look of printed posters into a digital format, these solutions offer a clean, paper-like experience that fits seamlessly into modern environments.

**Innovative • Seamless • Smart • Sustainable**



## TECHNOLOGY

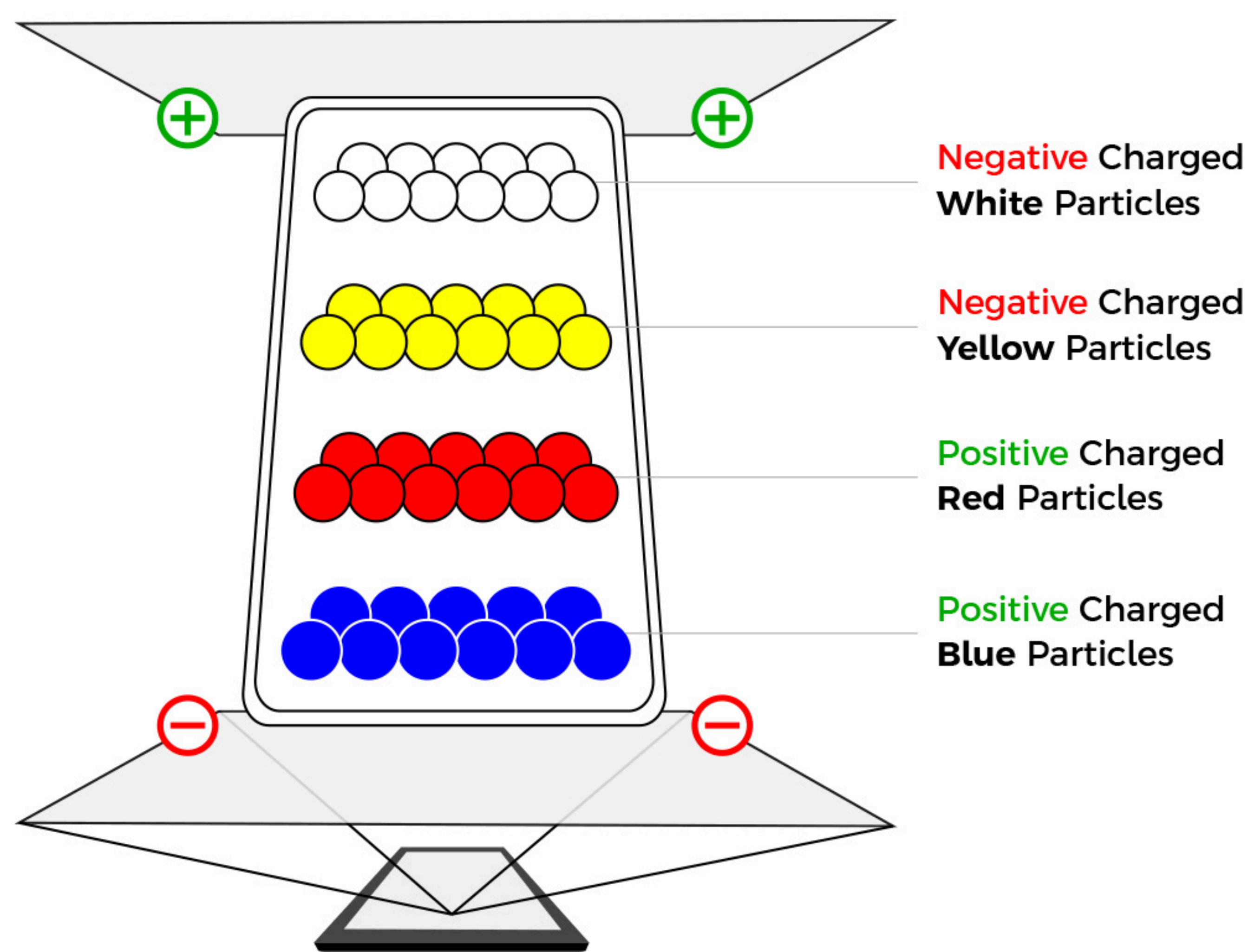
Colour E Ink technology delivers a natural, paper-like display experience designed for modern digital signage. Unlike conventional LCD or LED screens, it does not use a backlight. Instead, it reflects ambient light, ensuring excellent visibility in both indoor and outdoor environments, including direct sunlight.

The display operates using electrically charged color pigments that form images on the screen. Once content is displayed, it remains visible without continuous power, requiring energy only when updates are made.

With no backlight, the display produces no glare, no light emission and no eye strain, offering a comfortable and natural viewing experience like reading from paper.

This makes ePaper an energy-efficient, sustainable and reliable solution for businesses looking to replace traditional printed materials with dynamic digital displays.

E Ink technology reduces operational costs while improving readability and visual comfort, making it ideal for long-term use in retail, healthcare, corporate and hospitality environments.



## 20.5" A3 Tabletop

A compact, portable and engaging ePaper display designed to enhance customer interaction at key touchpoints. Featuring a 20.5" A3-size display, it delivers clear and eye-catching content, making it ideal for high-visibility areas.

Designed for countertop placement, it fits seamlessly near cashier counters, providing an effective way to showcase product promotions, special offers, announcements and important messages right at the point of interaction. This makes it especially suitable for retail stores, cafés, restaurants and service counters.

Its lightweight and portable design allows it to be easily moved and repositioned as needed, while maintaining a clean and professional appearance without occupying much space.

With its battery-powered design and wireless connectivity, content can be easily updated and managed remotely through a centralized platform, ensuring messaging stays fresh, relevant and consistent at all times.



## 20.5" A3 Q-pole

A smart and engaging ePaper display solution designed to enhance the customer experience while waiting in queues. The Q-Pole features a 20.5" A3-size display, making it ideal for delivering clear, eye-catching content in high-traffic environments.

Designed specifically for queue setups, it transforms waiting time into an opportunity for communication and promotion. Whether placed in banks, retail stores or service centers, the Q-Pole enables businesses to showcase product promotions, special offers, announcements or customer guidance in a modern and impactful way.

Its sleek pole-mounted design integrates seamlessly into queue setups, maintaining a neat and professional appearance without taking up extra space. The display is positioned at a comfortable viewing height, ensuring clear visibility and drawing attention effortlessly.

With its battery-powered design and wireless connectivity, content can be easily updated and managed, allowing businesses to keep promotions fresh, relevant and consistent always.



## 28.5" A2 Mobile Stand

A flexible and portable ePaper display solution designed for dynamic environments where mobility is essential. Equipped with built-in wheels, the unit can be easily moved and repositioned as needed, allowing seamless adaptability across different spaces. It features a 28.5" A2-size display, ensuring clear and impactful content visibility.

This display is ideal for creating a professional and welcoming atmosphere in locations such as hotel lobbies, airport lounges and reception areas. It enables businesses to present personalized welcome messages, announcements, or guidance for guests and customers in a clear and modern format.

Its battery-powered and wireless design allows for quick setup and easy content updates without complex installation, while the mobile structure ensures convenience without compromising on presentation. It is an effective solution for environments that require both flexibility and a consistent digital presence.



## 28.5" A2 A-Stand

A compact and portable ePaper display designed for everyday flexibility and ease of use. It is available in two options to suit different needs: a double-sided version, featuring one 28.5" A2-size display on the front and one on the rear for visibility from both directions and a single-sided version with a 28.5" A2-size display for more focused, one-directional communication.

The foldable structure enables easy handling and convenient storage, allowing the unit to be set up or packed away quickly while occupying minimal space when not in use. Its built-in battery allows it to be used conveniently in different locations without relying on a constant power connection.

Specially designed for cafés, restaurants and small retail spaces, this display serves as a modern replacement for traditional chalkboard signage. It maintains the familiar placement and purpose of classic boards while offering the advantage of digitally updated content ensuring a clean, consistent and professional presentation at all times.

With wireless connectivity, content can be updated easily, making it a simple and efficient solution for daily operations.

## 28.5" A2 T-Stand

A high-impact ePaper display solution designed with a unique multi-screen configuration to maximize visibility and communication. The T-Stand is available in two configurations to suit different requirements, featuring 28.5" A2-size displays for clear and impactful content presentation.

The double-sided option features four displays, with two positioned on the front (top and bottom) and two on the rear (top and bottom), allowing content to be presented simultaneously from both directions. The single-sided option includes two displays on one side, one on the top and one on the bottom offering a more focused communication set-up.

This flexible design ensures strong audience engagement in busy environments, making it highly effective where visibility is critical. Ideal for locations such as shopping malls, airports and large public spaces, the T-Stand enables clear and organized content delivery across multiple displays. Different messages, branding elements, or information can be displayed across each screen, enhancing communication without increasing footprint.

Its freestanding structure allows flexible placement in open areas, while its battery-powered and wireless design ensures quick, cable-free deployment. Content can be updated remotely through a centralized platform, making it easy to manage multiple displays and keep information consistent across locations.





### 28.5" A2 Double Sided Without Stand

A versatile double-sided ePaper display designed to be mounted on glass, ideal for retail environments such as shopping malls and supermarkets. It features a 28.5" A2 display on both sides, allowing content to be clearly visible from either direction perfect for high-traffic areas.

Mounted directly on glass, it maintains a clean and unobtrusive look while ensuring maximum visibility, keeping the space open and uncluttered. With a built-in battery, the display operates without the need for constant power, enabling a neat and cable-free installation.

Content can be updated remotely through a centralized platform, making it easy to manage multiple displays and keep information consistent and up to date across the store.

### 40.5" A1 A-Stand

A sleek and portable ePaper display designed for modern retail environments, offering flexibility and ease of use for everyday operations. Featuring a 40.5" A1 single sided display, it provides a large, clear viewing area for impactful, one-directional communication ideal for promotions, advertisements and brand messaging.

The foldable design makes it easy to handle and store, allowing the unit to be quickly set up, moved, or packed away while taking up minimal space when not in use. Powered by a built-in battery, it can be placed anywhere without the need for a constant power connection, giving you complete freedom in positioning.

Designed for shopping malls and retail stores, this display is a smart alternative to traditional signage, offering a clean, consistent and professional presentation. With wireless connectivity, content can be updated effortlessly, making it a simple and efficient solution for dynamic retail environments.



# FEATURES



Eco Friendly



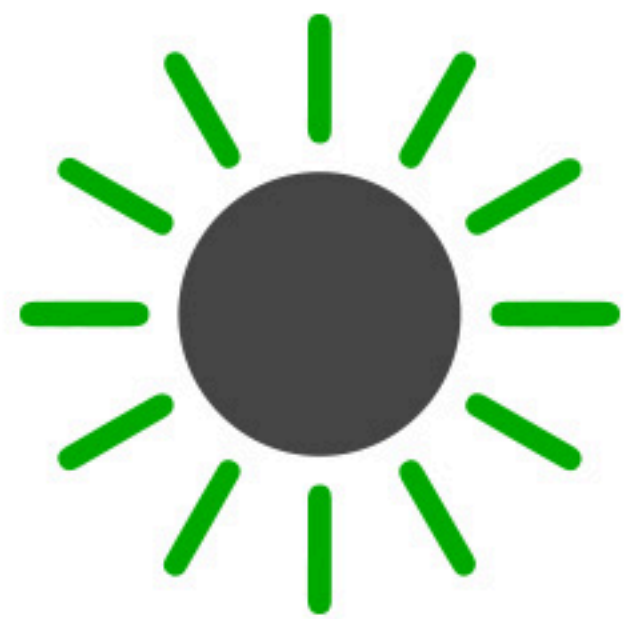
Wide Angle View



Energy Saving



Wireless Connetivity



Visible in Sun Light



Eye Comfort



Portable &  
Light Weight

# SPECIFICATIONS

## Display Specification

<b>Size</b> : (A1) 40.5"	(A2) 28.5"	(A3) 20.5"
<b>Type</b> : E ink Spectra 6	E ink Spectra 6	E ink Spectra 6
<b>Resolution</b> : 3060 x 4320 pixels	2160 x 3060 pixels	1530 x 2160 pixels
<b>PPI</b> : 132	132	132
<b>Orientation</b> : Portrait or Landscape	Portrait or Landscape	Portrait or Landscape
<b>Housing</b> : Aluminum and Mild Steel	Aluminum and Mild Steel	Aluminum and Mild Steel

## Battery



**Battery Type** : Li Ion  
**Capacity** : 11.1V 4,000mAh Li-ion Rechargeable Battery  
**Power Adapter** : 12V AC-DC

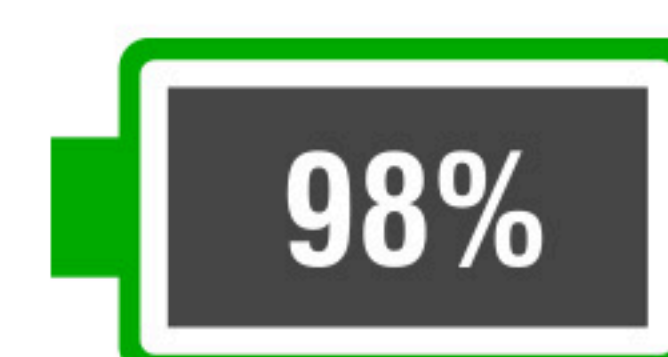
## Cloud Application



Content Magement



Device Monitoring



Battery Level

GET STARTED WITH



# DELIGHT

Discover how our ePaper Solution  
can transform the way you communicate.  
Let's create impactful and engaging  
experiences together.



**[Delight OptoElectronics Pte Ltd](#)**

22 SIN MING LANE #06-76 MIDVIEW CITY, SINGAPORE, 573969

Company registration number: 201403598C



Tel: +65 6429 8402 (Mon - Sat, 9am - 6pm)



+65 8900 0895



[cs@delight.com.sg](mailto:cs@delight.com.sg)