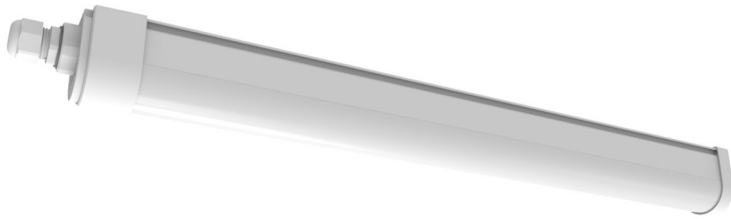


SUNLUX[®] SUX218 & SUX236

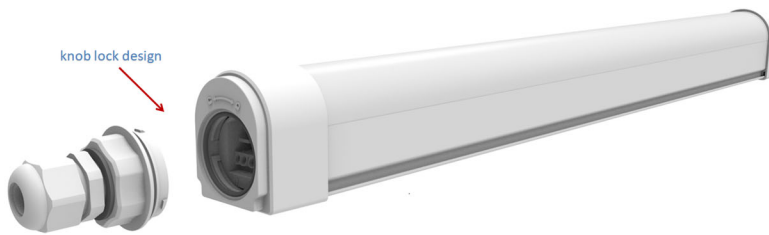
LED Watertight Luminaire



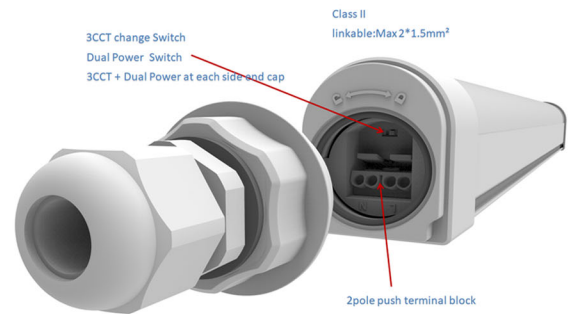
M20 cable gland



Knock-up hole



knob lock design



3CCT change Switch
Dual Power Switch
3CCT + Dual Power at each side end cap

Class II
linkable:Max 2*1.5mm²

2pole push terminal block

Technical Specification

Model	Product size (mm) LxWxH	Voltage V	Power W	CCT	lm	lm/W	IP	IK	Protection class	CRI	PF
SUX218	611*48*60	100-240V	10W/18W	3000K/4000K/ 6500K	2160	120	IP66	08	CLASS II	>80	>0.9
SUX236	1211*48*60	100-240V	18W/36W	3000K/4000K/ 6500K	4320	120	IP66	08	CLASS II	>80	>0.9

Optional function:

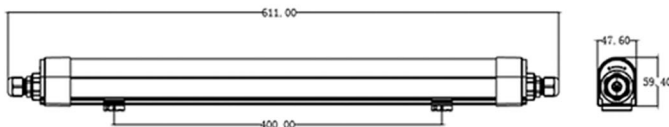
3 CCT change 3000K 4000K 6500K by DIP switch

Dual Power by DIP switch

3CCT + Dual Power at each side end cap

linkable: Max 2*1.5mm²

SUX218



SUX236

