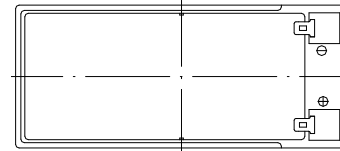
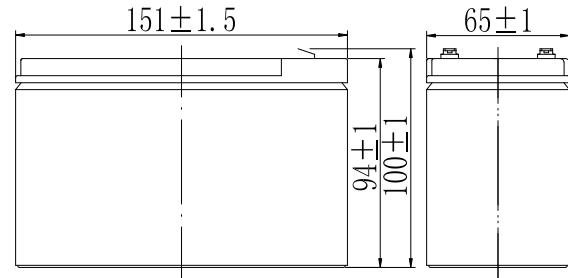


Specifications

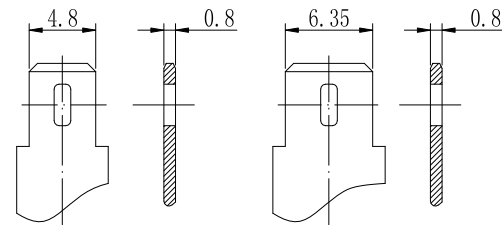
Nominal Voltage		12 V
Capacity (25°C)	20HR(10.5V)	7Ah
	10HR(10.5V)	6.2Ah
	1HR(9.60V)	4.29Ah
Dimension	Length	151 ± 1.5mm (5.94inch)
	Width	65 ± 1mm (2.56inch)
	Height	94 ± 1mm (3.70inch)
	Total Height	100 ± 1mm (3.94inch)
Approx. Weight		2.15kg (4.80lbs) ± 5%
Terminal type		T1/T2
Internal resistance (Fully charged, 25°C)		Approx. 32mΩ
Capacity affected by temperature (20HR)	40°C	102%
	25°C	100%
	0°C	85%
	-15°C	65%
Self-discharge (25°C)	3 month	Remaining Capacity: 91%
	6 month	Remaining Capacity: 82%
	12 month	Remaining Capacity: 65%
Nominal operating temperature		25°C ± 3°C (77°F ± 5°F)
Operating temperature range	Discharge	-15°C ~ 50°C (5°F ~ 122°F)
	Charge	-10°C ~ 50°C (14°F ~ 122°F)
	Storage	-20°C ~ 50°C (-4°F ~ 122°F)
Float charging voltage(25°C)		13.60 to 13.80V Temperature compensation: -18mV/°C
Cyclic charging voltage(25°C)		14.50 to 14.90V Temperature compensation: -30mV/°C
Maximum charging current		2.1A
Terminal material		Copper
Maximum discharge current		105A(5 sec.)
Designed floating life(20°C)		10 years



Dimensions



Terminal



Terminal T1

Terminal T2

- ◆ Absorbent glass mat technology;
- ◆ Recognized by UL & CE;
- ◆ Flame Retardant container V0.

Constant Current Discharge Characteristics (A, 25°C)

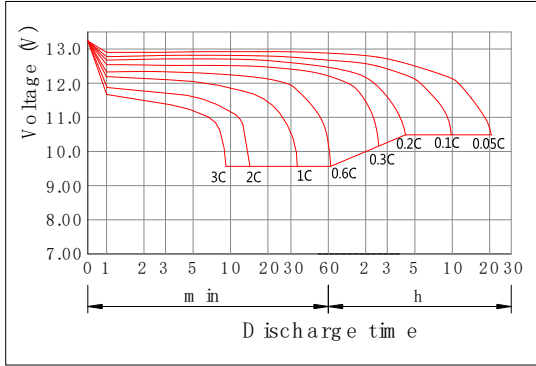
F.V/TIME	5min	10min	15min	30min	60min	2h	3h	4h	5h	10h	20h
9.60V	25.1	15.8	12.5	7.00	4.29	2.34	1.68	1.35	1.14	0.63	0.36
9.90V	24.3	15.4	12.2	6.86	4.23	2.33	1.67	1.34	1.14	0.63	0.36
10.2V	23.3	14.7	11.8	6.65	4.12	2.31	1.66	1.33	1.13	0.63	0.36
10.5V	22.3	14.1	11.4	6.49	4.04	2.28	1.65	1.32	1.12	0.62	0.36
10.8V	21.1	13.3	10.8	6.25	3.91	2.22	1.60	1.28	1.09	0.61	0.35

Constant Power Discharge Characteristics (Watt, 25°C)

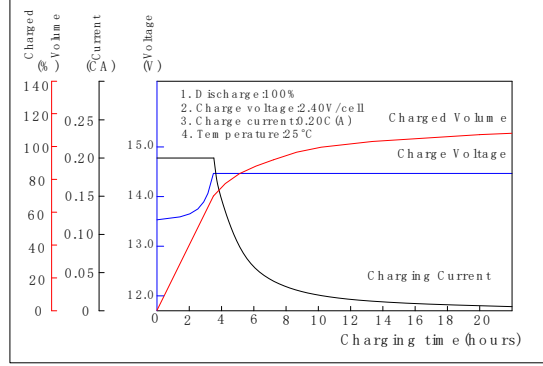
F.V/TIME	5min	10min	15min	30min	60min	2h	3h	4h	5h	10h	20h
9.60V	280	179	143	80.2	49.7	27.4	20.0	16.0	13.7	7.59	4.20
9.90V	271	173	140	78.6	48.9	27.3	19.9	15.9	13.6	7.56	4.19
10.2V	260	166	134	76.2	47.7	27.0	19.7	15.8	13.5	7.52	4.16
10.5V	249	159	130	74.3	46.7	26.6	19.6	15.7	13.4	7.48	4.14
10.8V	235	150	123	71.6	45.3	25.9	19.0	15.2	13.0	7.33	4.06

Note: The above characteristics data can be obtained within three charge/discharge cycles.

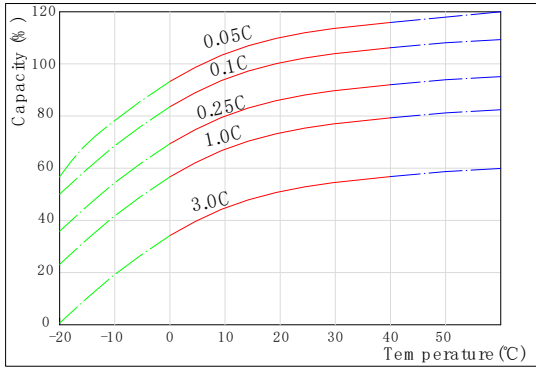
Discharge Characteristics(25°C)



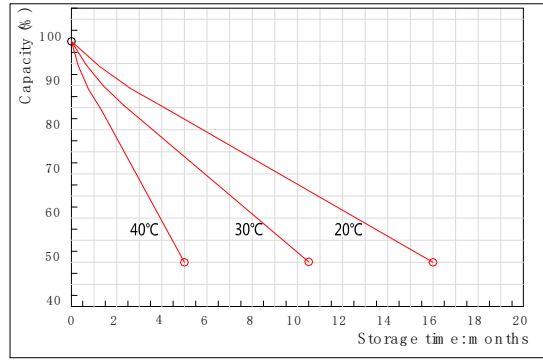
Charging Characteristics(25°C)



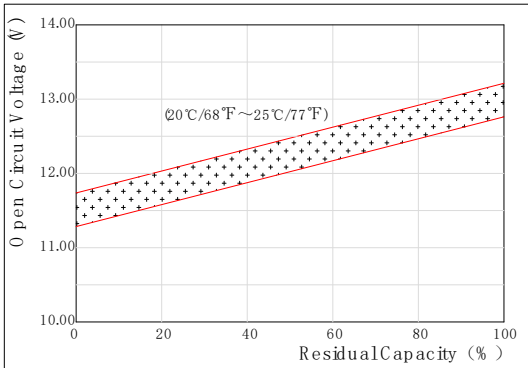
Effect of Temperature on Capacity



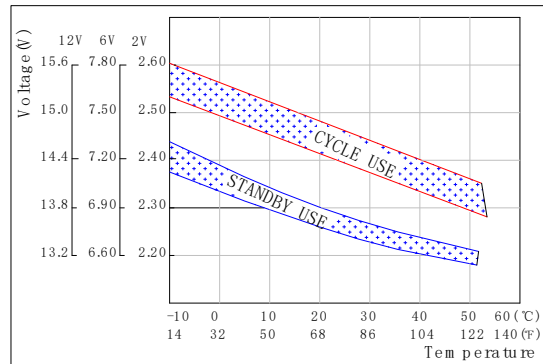
Self-discharge Characteristics



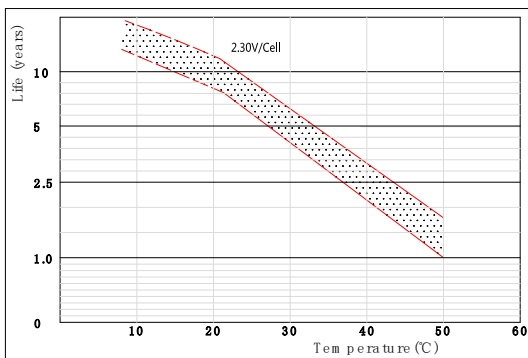
The Relationship for Open Circuit Voltage and Residual Capacity (25°C)



The Relationship for Charging Voltage and Temperature



Floating Life on Temperature



Cycle Life on D.O.D(25°C)

