

# Durable Lighting Made for Industrial Safety



## Hazardous Location LED Luminaire A Series (Zone 1)



A



A3



A4



## Product Description

The A Series LED luminaire is the ideal choice for marine and hazardous applications. They can be used in locations where moisture, dirt, dust, corrosion and vibration may be present, or areas where wind, water, snow or high ambient can be expected.

## Features

- 0-10V dimming
- High luminous efficacy - Up to 140 lumens per watt
- Compact and robust structure, excellent reliability
- Various installation ways for different applications
- Great impact resistance with IK08/IK10 certified
- Copper-free aluminum housing, great corrosion resistance and cooling performance
- Emergency function optional for A3 and A4

## Compliance

ATEX Standard:

Ex II 2 G Ex eb mb IIC T6...T4 Gb

Ex II 2 D Ex tb IIIC T80°C...T100°C Db

IECEx Standard:

Ex eb mb IIC T6...T4 Gb

Ex tb IIIC T80°C...T100°C Db

Zone 1

CB (Ref. Certif. No.: DE 2-038462-M1)

IP66/IP67

IK08 (glass cover)

IK10 (with wire guard)

1000 hours salt spray



## Application

- Power Plants
- Heavy Industrials Storage Facility
- Paper mills
- Wastewater Treatment Plants
- Loading Docks Platforms
- Offshore Environments
- Chemical Processing Facility
- Petrochemical Processing Facility
- Metallurgical Industry
- Coal Mine
- Food and Alcohol industry

## Warranty

5-Year Standard Warranty

LED lumen Maintenance: L70> 78,000 Operation Hours@55°C

## Technical Parameter

### • Electrical

Specification	EX-80W-A YZDAF	EX-100W-A YZDAF
Rated Power	80W	100W
Input Voltage	200-250VAC	
Input Frequency	50/60Hz	
Power Factor	> 0.95	
Emergency Function	No emergency function	

### • Optical

Specification	EX-80W-A YZDAF	EX-100W-A YZDAF
Lumen Output	11200lm	14000lm
Lumens Per Watt	140lm/W	
CCT	2200K-7000K	
CRI	> 70	
Beam Angle	40°/60°/90°/120°	
Dimming	Both non-dimmable and 0-10V dimming are available	

### • Environmental

Specification	EX-80W-A YZDAF	EX-100W-A YZDAF
Ambient Operating Temperature	T5: -40°C to +45°C (-40°F to +113°F); -40°C to +65°C (-40°F to +149°F); T6: -40°C to +40°C (-40°F to +104°F); -40°C to +55°C (-40°F to +131°F)	

### • Mechanical

Specification	EX-80W-A YZDAF	EX-100W-A YZDAF
Housing Material	Copper-free aluminum	
Lens	Tempered glass & PC	
Hardware	Stainless steel	
Fixture Color	Gray RAL7040 (Standard)	
Protection	IP66/IP67/IK08 (glass cover)/IK10 (with wire guard)	
Mounting	Ceiling, Wall, Hook, Trunnion, Pole, Stanchion	
Cable Entries*	Side: 3/4 NPT, M20, M25, 1/2NPT Top: 3/4 NPT, M25	

\*Cable Entries: For side and top, 3/4 NPT is standard. If others are required, customer needs to indicate when placing an order.



## Technical Parameter

### • Electrical

Specification	EX-150W-A3 YZDAF	EX-180W-A3 YZDAF	EX-200W-A3 YZDAF
Rated Power	150W	180W	200W
Input Voltage	200-250VAC		
Input Frequency	50/60Hz		
Power Factor	> 0.95		
Emergency Function	No emergency function		

### • Optical

Specification	EX-150W-A3 YZDAF	EX-180W-A3 YZDAF	EX-200W-A3 YZDAF
Lumen Output	21000lm	25200lm	28000lm
Lumens Per Watt	140lm/W		
CCT	2200K-7000K		
CRI	> 70		
Beam Angle	40°/60°/90°/120°		
Dimming	Both non-dimmable and 0-10V dimming are available		

### • Environmental

Specification	EX-150W-A3 YZDAF	EX-180W-A3 YZDAF	EX-200W-A3 YZDAF
Ambient Operating Temperature	T5: -40°C to +45°C (-40°F to +113°F); -40°C to +65°C (-40°F to +149°F); T6: -40°C to +40°C (-40°F to +104°F) ; -40°C to +55°C (-40°F to +131°F)		

### • Mechanical

Specification	EX-150W-A3 YZDAF	EX-180W-A3 YZDAF	EX-200W-A3 YZDAF
Housing Material	Copper-free aluminum		
Lens	Tempered glass & PC		
Hardware	Stainless steel		
Fixture Color	Gray RAL7040 (Standard)		
Protection	IP66/IP67/IK08 (glass cover)/IK10 (with wire guard)		
Mounting	Ceiling, Wall, Hook, Pole, Stanchion		
Cable Entries*	Side: 3/4 NPT, M20, M25, 1/2NPT Top: 3/4 NPT		

\*Cable Entries: For side and top, 3/4 NPT is standard. If others are required, customer needs to indicate when placing an order.

## Technical Parameter

### • Electrical

Specification	EX-250W-A4 YZDAF	EX-300W-A4 YZDAF	EX-400W-A4 YZDAF
Rated Power	250W	300W	400W
Input Voltage	200-250VAC		
Input Frequency	50/60Hz		
Power Factor	> 0.95		
Emergency Function	No emergency function		

### • Optical

Specification	EX-250W-A4 YZDAF	EX-300W-A4 YZDAF	EX-400W-A4 YZDAF
Lumen Output	35000lm	42000lm	56000lm
Lumens Per Watt	140lm/W		
CCT	2200K-7000K		
CRI	> 70		
Beam Angle	40°/60°/90°/120°		
Dimming	Both non-dimmable and 0-10V dimming are available		

### • Environmental

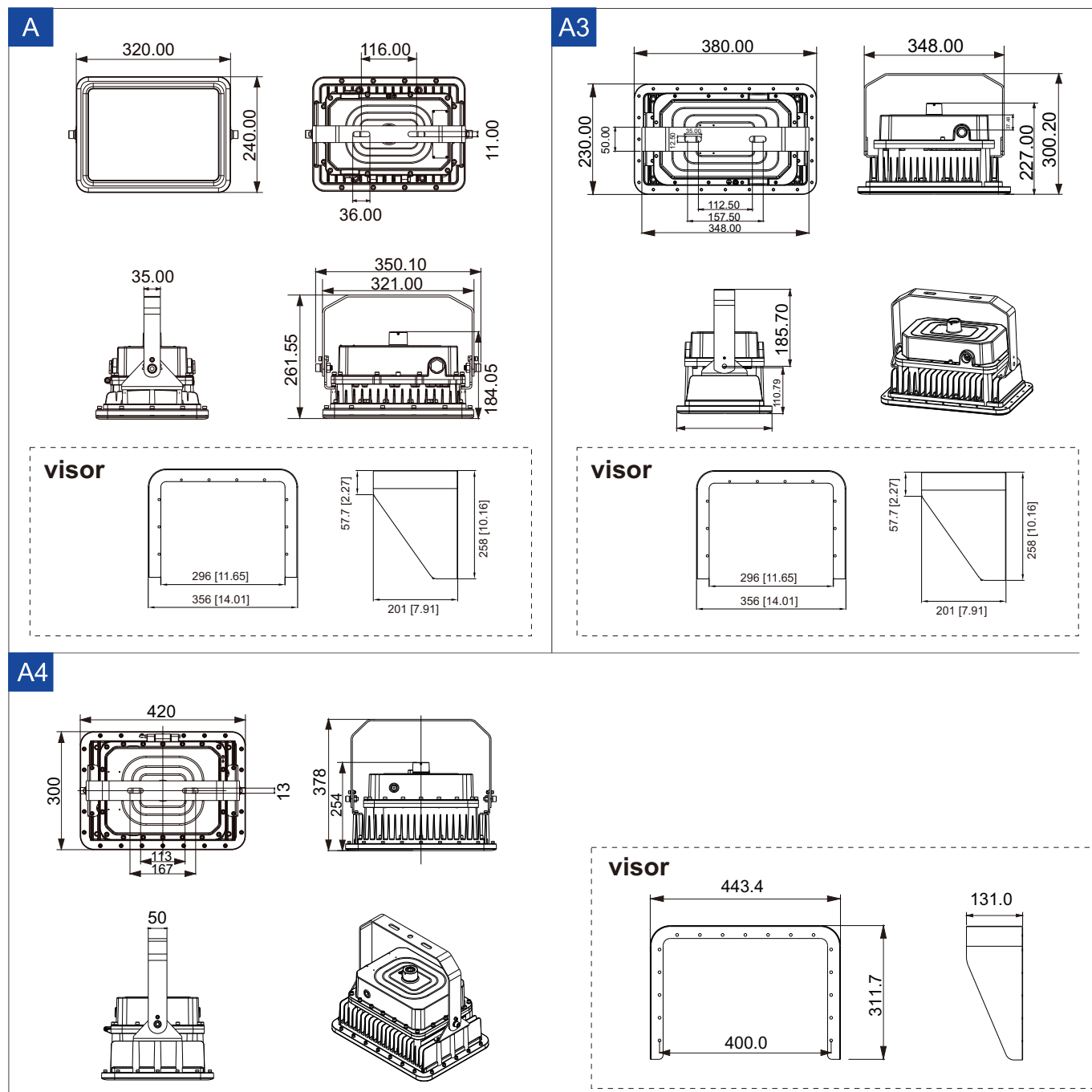
Specification	EX-250W-A4 YZDAF	EX-300W-A4 YZDAF	EX-400W-A4 YZDAF
Ambient Operating Temperature	T4: -40°C to +55°C (-40°F to +131°F); -40°C to +65°C (-40°F to +149°F); T5: -40°C to +25°C (-40°F to +77°F); -40°C to +40°C (-40°F to +104°F); -40°C to +45°C (-40°F to +113°F);		

### • Mechanical

Specification	EX-250W-A4 YZDAF	EX-300W-A4 YZDAF	EX-400W-A4 YZDAF
Housing Material	Copper-free aluminum		
Lens	Tempered glass & PC		
Hardware	Stainless steel		
Fixture Color	Gray RAL7040 (Standard)		
Protection	IP66/IP67/IK08 (glass cover)/IK10 (with wire guard)		
Mounting	Ceiling, Wall, Hook, Pole, Stanchion		
Cable Entries*	Side: 3/4 NPT, M20, M25, 1/2NPT Top: 3/4 NPT		

\*Cable Entries: For side and top, 3/4 NPT is standard. If others are required, customer needs to indicate when placing an order.

## Product Dimensions (all in millimeters)

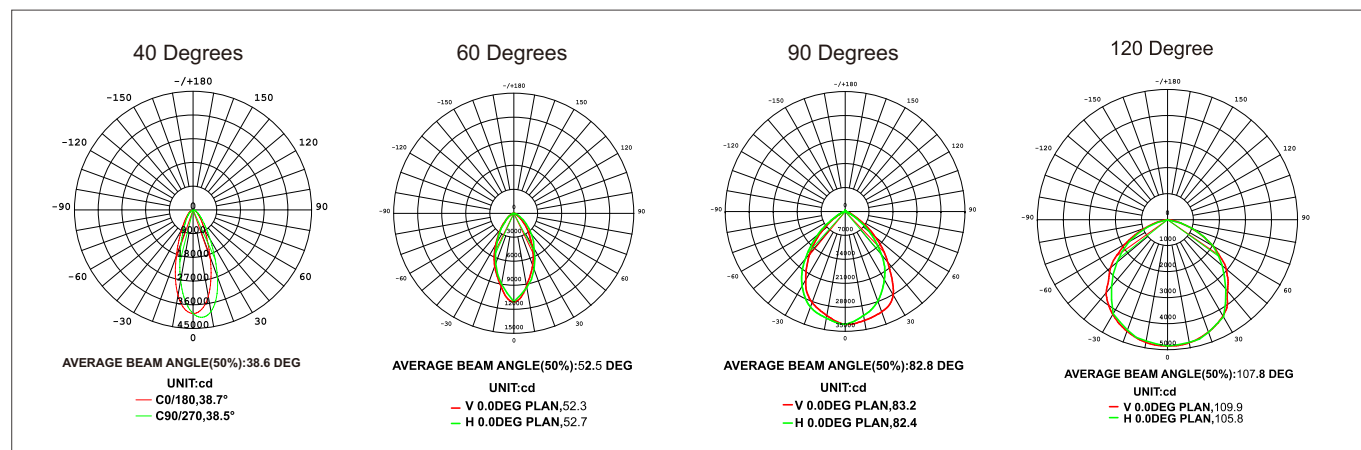


### • Packing Information

Model	Net Weight*	Gross Weight*	Quantity/Carton	Package Dimensions (LxWxH)
EX-XXXW-A YZDAF	6.95kg	9.50kg	1 pc	450x340x370mm
EX-XXXW-A3 YZDAF	8.30kg	11.35kg	1 pc	470x370x300mm
EX-XXXW-A4 YZDAF	15.1kg	18.55kg	1 pc	520x490x380mm

\*Please note that net weight and gross weight may be subject to change because of actual configuration.

## Photometric



## Ordering Guide

EX - XXXW - A/A3/A4 Y Z D A F

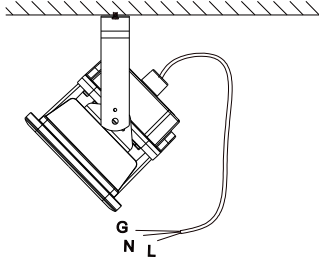
1 2 3 4 5 6 7 8

1.Model Series	2.Wattage	3.Product Code	4.Dimmable Optional
Explosion Proof Light	A: 80/100W A3:150/180/200W A4: 250/300/400W	A A3 A4	Y: Dimmable N: Non-dimmable
5.Color Temp.	6.Beam Angle	7.Glass Type	8.Optional
22=2200K, 30=3000K, ..., 70=7000K	D40=40°, D45=45° D60=60°, D90=90°	A=blank: flat glass A=C: Drop lens & wire guard	F: for food zone or blank



## Mounting Methods and Accessories

### • Option 1: Ceiling Mounting

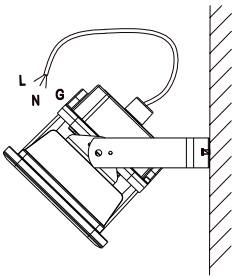


### • Accessory



**Bracket**

### • Option 2: Wall Mounting

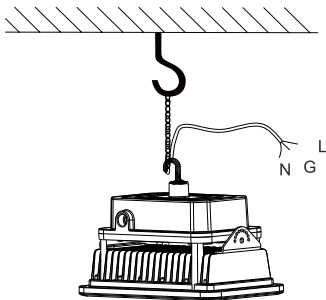


### • Accessory



**Bracket**

### • Option 3: Hook Mounting



### • Accessories

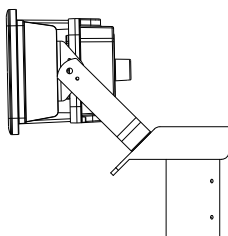


**Hook  
Ex-Hook**



**Pendant Chain  
Ex-Straight Chain**

### • Option 4: Trunnion Mounting (Only for A and A2)



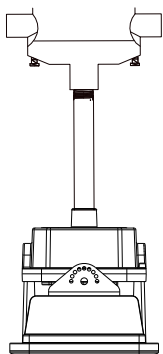
### • Accessory



**EX-Slip  
Fitter Mounting Kit**

## Mounting Methods and Accessories

### • Option 5: Pole Mounting (Vertical)



### • Accessories

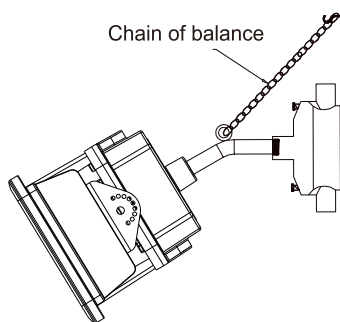


**Junction Box**  
EX-HD51-KB1



**Pole**  
Ex-Straight Pipe

### • Option 6: Pole Mounting (Non-vertical)



### • Accessories



**Junction Box**  
EX-HD51-KB1

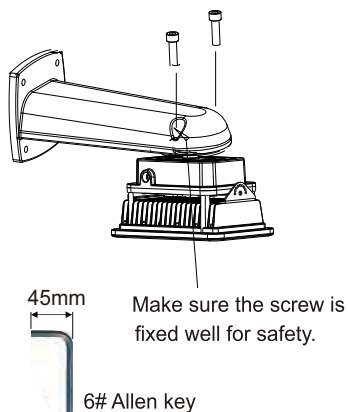


**Pole**  
Ex-Bended Pipe



**Pendant Chain**  
Ex-Straight Chain

### • Option 7: Stanchion Mounting on the Wall



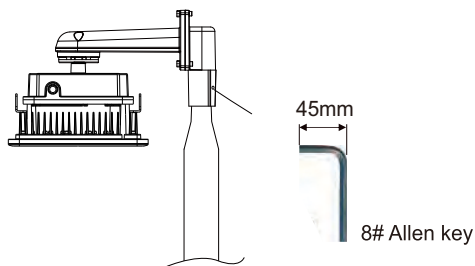
### • Accessory



**Stanchion Arm**  
Ex-MArm

## Mounting Methods and Accessories

- Option 8: Stanchion Mounting on the Pole (90 Degree)

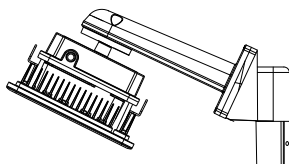


- Accessories

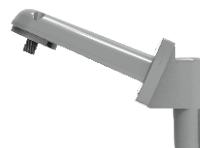


**EX-90PSupport**

- Option 9: Stanchion Mounting on the Pole (25 Degree)

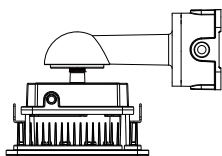


- Accessories



**EX-25PSupport**

- Option 10: Wall Mounting with Junction Box (90 Degree)

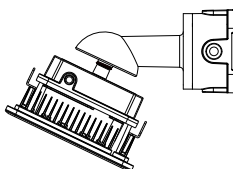


- Accessory



**Stanchion Arm  
EX-HD51-KYD 90**

- Option 11: Wall Mounting with Junction Box (25 Degree)



- Accessory



**Stanchion Arm  
EX-HD51-KYD 25**