

Glass Reinforced Polyester Enclosures, IP66/67

Application

Industrial and Hazardous areas

Protection Degree

IP66 or 67

Certification

ATEX EEx e (Zone 1 & Zone 2) to BS EN 60079-7
 ATEX EEx nA (Zone 2) to BS EN 60079-15
 ATEX EEx nR (Zone 2) to BS EN60079-15
 GOST-R and GOST-K Ex e (Zone 1 & Zone 2)
 NEMA 4X (CSA, UL & FM) Class 1 Division 2
 IEC Ex

Material

Glass Reinforced Polyester (RAL7001 grey) or
 Carbon Loaded Glass Reinforced Polyester
 (Black)

Temperature Rating

Neoprene gasket: -40° to 80° C (-40° to 176° F)
 Silicone gasket: -70° to 130° C (-94° to 266° F)

Power Rating

13.793W



Terminal Populations (Maximum Number of Rails = 1)

Weidmuller		Entrelec		Wago	
BK4 (4 way)	9	MA2.5/5	63	280-992	58
BK6 (6 way)	6	M4/6	52	280-999	58
BK12 (12 way)	3	M6/8	40	281-691	50
MK 6/3	6	M10/10	32	281-992	50
MK 6/4	6	M16/12	26	281-993	50
MK 6/6	4	M35/16	20	282-691*	39
SAK 2.5	52			284-691*	31
SAK 4	48			283-691	26
SAK 6N	40			285-691	0
SAK 10	32			280-998	58
SAK 16	26			281-998	50
SAK 35	20			264-120	52
				264-220	31
				264-132(2)	11
				264-134(4)	7
				262-132(2)	10
				264-134(4)	7

* Check that this enclosure can accommodate the cable bending radius

Drilling Envelope Dimensions (mm)

	Side A - C	Side B - D
Width	312	82
Height	65	60

Gland Entry Matrix *

Size	Side A - C	Side B - D
M16	18	4
M20	8	2
M25	6	1
M32	5	1
M40	0	0

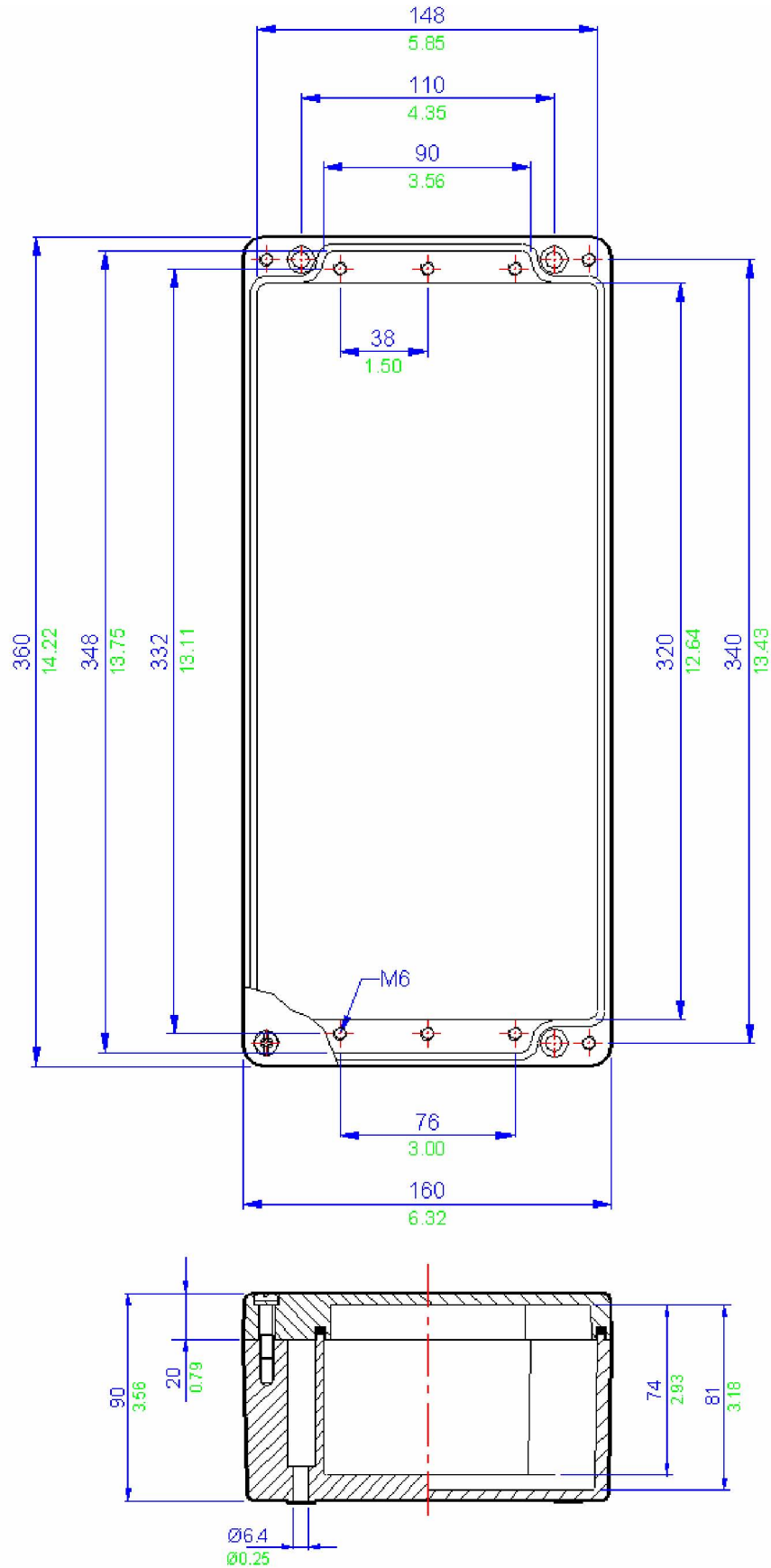
* Using standard gland clearances

Specifications

Part Number	Material	Width (mm)	Length (mm)	Depth (mm)	Weight (g)
BPG10	GRP	360	160	90	2150
BPGC10	Carbon Loaded GRP	360	160	90	2150

Glass Reinforced Polyester Enclosures, IP66/67

Technical Drawing



All blue dimensions in mm, all green dimensions in decimal inches (drawing not to scale)